



800-504-5684

info@bigdogbumpers.com

www.bigdogbumpers.com

Ford 1999-2007 F250 / F350 Front Bumper Replacement Installation Instructions

1) Remove 4 bolts beside tow hooks to remove factory bumper. Retain bolts and tow hooks for use in step 7.

(see figure 1)

2) Remove fog lights from factory bumper keeping plastic pins and adjusting screw assembly in tact for future installation.

3) Remove casing from factory fog lights and discard. Install fog lights to brackets located on backside of new bumper using hardware removed in step 2. *(see figure 2)*



Figure 1

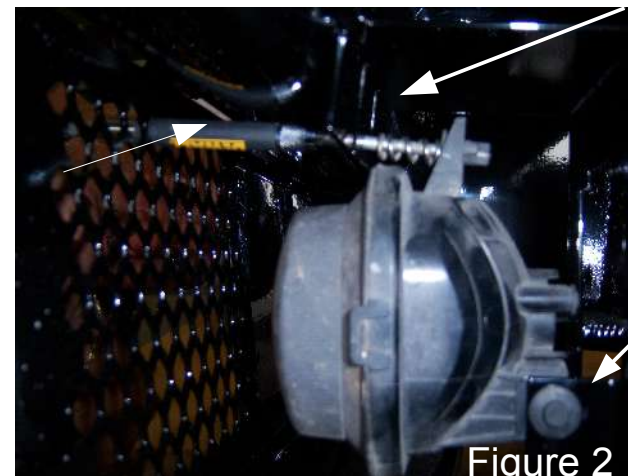


Figure 2

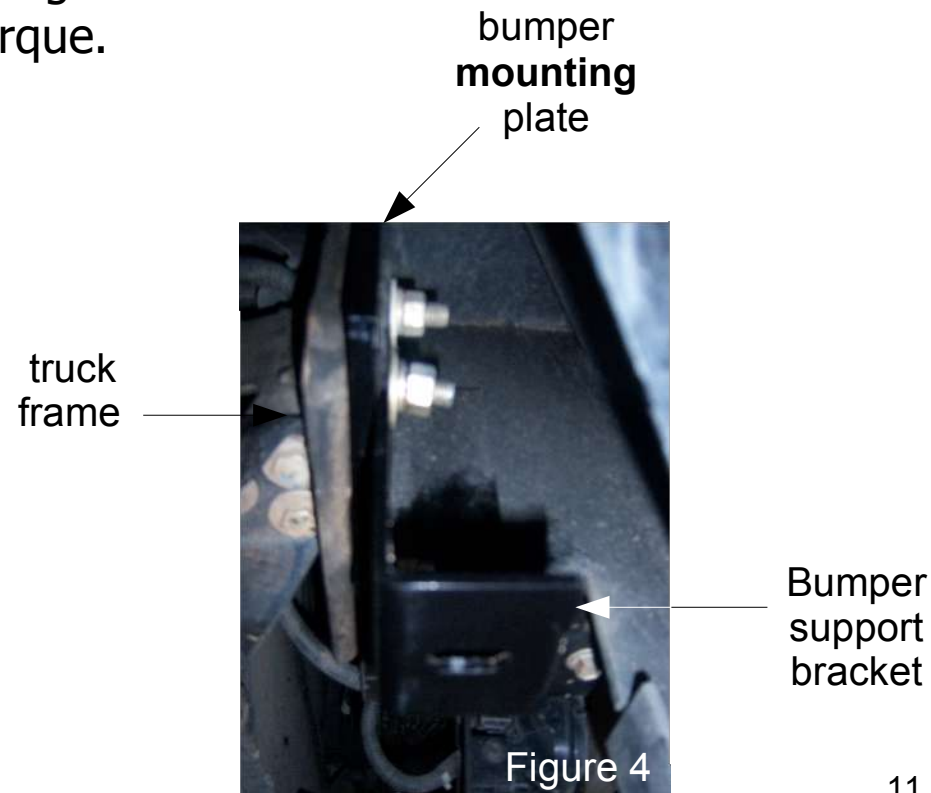
Adjusting
screw
assembly

pins

4) Lift bumper and align with truck frame and secure with (4) ½"x 2" bolts provided through the tow hook cutout . (see figure 3)

5) Install bumper support bracket provided to the backside of bumper mounting plate with (4) ½" x 2" bolts provided. (see figure 4)

6) Adjust bumper and tighten all bolts with 75 lbs of torque.



7) Attach J bracket provided to bumper support bracket installed in step 5 using (1) $\frac{1}{2}$ " x 2" bolt provided. Attach the other end of the bracket to the truck chassis using (1) $\frac{1}{2}$ " x 2" bolt provided. Tighten bolts with 75 lbs of torque. (see figure 5)

8) Install tow hook removed in step 2 with original hardware. Plug in wiring harness to fog lights. (see figure 6)

Installation Kit Provided:

(1) bumper support bracket right
(1) bumper support bracket left
(1) J bracket right
(1) J bracket left

(16) $\frac{1}{2}$ " x 2 hex bolts
(16) $\frac{1}{2}$ " hex nuts
(16) $\frac{1}{2}$ " flat washers

truck
chassis →



Figure 5

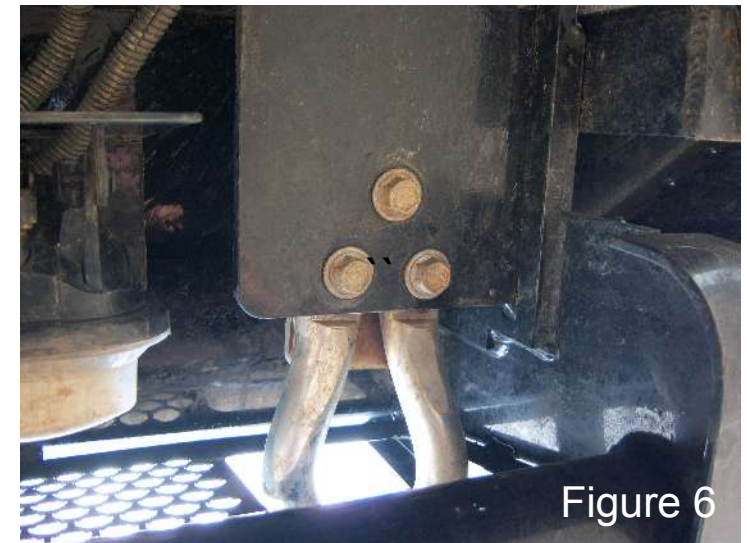


Figure 6

01/08R2